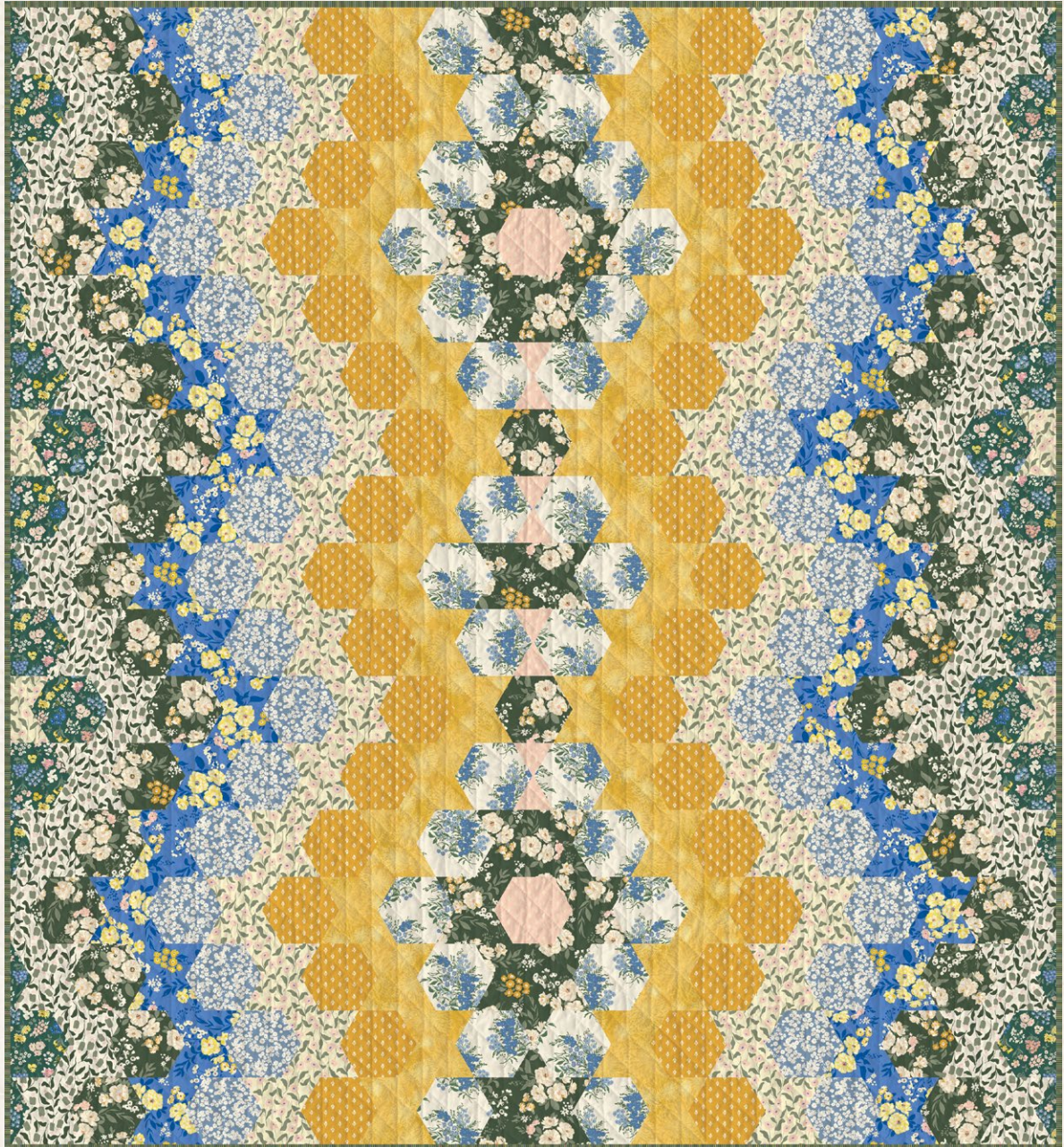


featuring A YEAR IN PETALS COLLECTION BY BONNIE CHRISTINE

Garden's
CHRONICLE

X
X
X
X
X
X
X
X
X
X
X
X



FREE PATTERN

XXXXXXXXXXXXXXXXXXXXXXXXXX

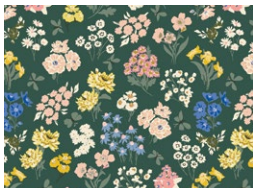
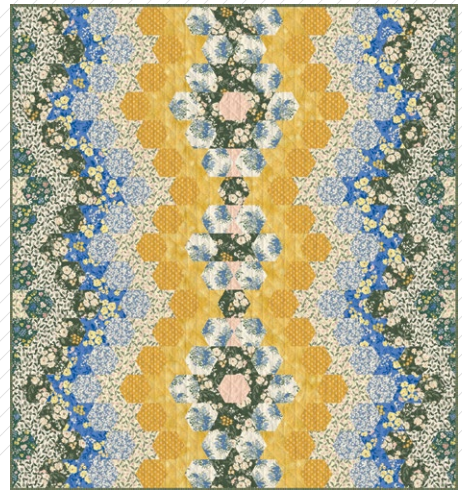


Garden's CHRONICLE

QUILT DESIGNED BY AGFstudio

A YEAR IN petals

FABRICS DESIGNED BY BONNIE CHRISTINE



Fabric A
AYP49203
BOUNTIFUL GARDEN NIGHT



Fabric B
AYP39208
MOUNTAIN BUDS WHISPER



Fabric C
AYP39200
GARDEN SONNET DUSK



Fabric D
AYP39205
SMOKY BLOSSOMS CLOUD



Fabric E
AYP39204
HARVEST HONEY



Fabric F
FE506
SUNFLOWER



Fabric G
AYP39206
MEADOW CLEAR SKIES



Fabric H
AYP49204
HARVEST BLUSH



Fabric I
AYP49200
GARDEN SONNET DAWN



Fabric J
AYP49209
MOUNTAIN FLORA BLOOM



Fabric K (BINDING)
BINAYP39
GARDEN BOUND



BACKING
AYP39201
APPALACHIAN GOLDEN HOUR



FINISHED SIZE | 83½" x 80½"

Please read all instructions thoroughly before beginning.

FABRIC REQUIREMENTS

Fabric A	AYP49203	7/8 yd.
Fabric B	AYP39208	1 yd.
Fabric C	AYP39200	1½ yd.
Fabric D	AYP39205	1 yd.
Fabric E	AYP39204	1 yd.
Fabric F	FE506	1 yd.
Fabric G	AYP39206	7/8 yd.
Fabric H	AYP49204	½ yd.
Fabric I	AYP49200	1 yd.
Fabric J	AYP49209	1½ yd.
Fabric K	BINAYP39	5/8 yd.

BACKING FABRIC
AYP39201 9 yds (Suggested)

BINDING FABRIC
Fabric **K** BINAYP39 5/8 yd. (Included)

CUTTING DIRECTIONS

Please ensure that all fabrics are ironed thoroughly before cutting them. ¼" seam allowances are included. WOF means width of the fabric.

Fabric A

Cut (9) 3½" x WOF strips, then;
• Sub-cut (60) half hexagon template.

Fabric B

Cut (10) 3½" x WOF strips, then;
• Sub-cut (68) half hexagon template.

Fabric C

Cut (18) 3½" x WOF strips, then;
• Sub-cut (120) half hexagon template.

Fabric D

Cut (10) 3½" x WOF strips, then;
• Sub-cut (68) half hexagon template.

Fabric E

Cut (10) 3½" x WOF strips, then;
• Sub-cut (68) half hexagon template.

Fabric F

Cut (10) 3½" x WOF strips, then;
• Sub-cut (68) half hexagon template.

Fabric G

Cut (9) 3½" x WOF strips, then;
• Sub-cut (60) half hexagon template.

Fabric H

Cut (4) 3½" x WOF strips, then;
Sub-cut (24) half hexagon template.

Fabric I

Cut (10) 3½" x WOF strips, then;
• Sub-cut (68) half hexagon template.

Fabric J

Cut (11) 3½" x WOF strips, then;
• Sub-cut (76) half hexagon template.

Fabric K

Eight (8) 2½" x WOF strips. (Binding)

Note: To minimize fabric waste make sure to cut the templates with the fabric open. You should be able to fit 7 templates per WOF strip.

CONSTRUCTION

Sew all rights sides together with 1/4" seam allowance.

Row 1:

Row 1 is made out of line 1 and line 2.

Line 1: Arrange template from fabrics **A, B, C, I, D, J, E, F, G** and **C** in the order shown on diagram below. Pay attention to the position of the templates. In this line you start with fabric **A**, and the template is positioned with the narrow side up.



DIAGRAM 1

Line 2: Arrange template from fabrics **A, B, C, I, D, J, E, F, G** and **C** in the order shown on diagram below. Pay attention to the position of the templates, in line 2 you also start with fabric **A**, but this time the template is positioned with the wide side of the template up.



DIAGRAM 2

- Sew line 1 and 2. Make a total of (16) Row 1.

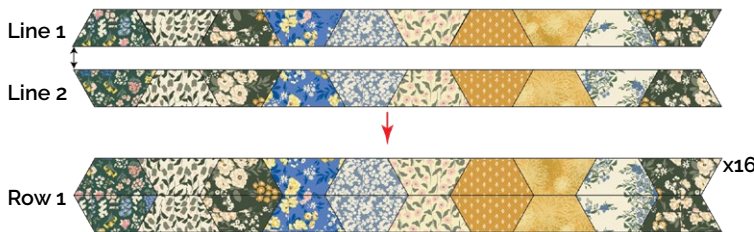


DIAGRAM 3

Row 2:

Row 2 is made out of line 3 and line 4.

Line 3: Arrange template from fabrics **B, C, I, D, J, E, F, G, C** and **H** in the order shown on the diagram below. Pay attention to the position of the templates, in line 3 you start with fabric **B**, and the template is positioned with the wide side up.



DIAGRAM 4

Line 4: Arrange template from fabrics **B, C, I, D, J, E, F, G, C** and **H** in the order shown on diagram below. Pay attention to the position of the templates, in line 4 you also start with fabric **B**, but this time the template is positioned with the narrow side of the template up.



DIAGRAM 5

- Sew line 3 and 4. Make a total of (4) Row 2.

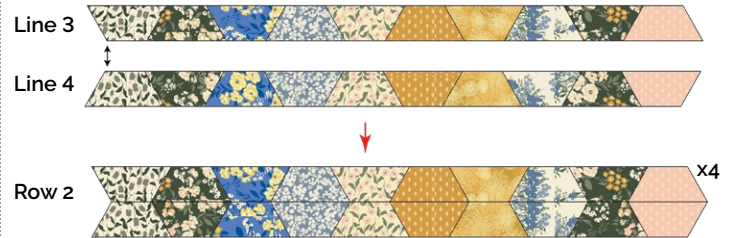


DIAGRAM 6

Row 3:

Row 3 is made out of line 5 and line 6.

Line 5: Arrange template from fabrics **J, A, B, C, I, D, J, E, F** and **C** in the order shown on the diagram below. Pay attention to the position of the templates, in line 5 you start with fabric **J**, and the template is positioned with the wide side of the template up.



DIAGRAM 7

Line 6: Arrange template from fabrics **J, A, B, C, I, D, J, E, F, C** in the order shown on diagram below. Pay attention to the position of the templates, in line 6 you also start with fabric **J**, but this time the template is positioned with the narrow side of the template up.



DIAGRAM 8

• Sew Line 5 and 6. Make a total of (4) Row 3.

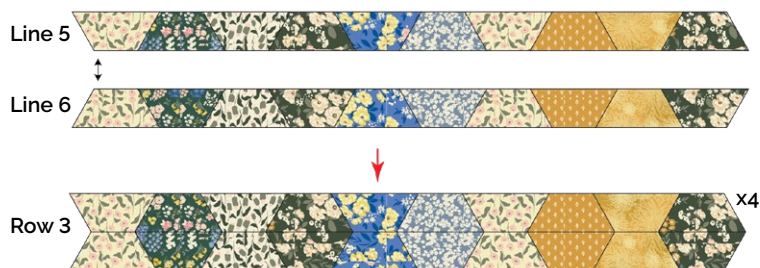


DIAGRAM 9

Row 4:

Row 4 is made out of line 7 and line 8.

Line 7: Arrange template from fabrics **A, B, C, I, D, J, E, F, G, H** in the order shown on the diagram below. Pay attention to the position of the templates, in line 7 you start with fabric **A**, and the template is positioned with the narrow side of the template up.

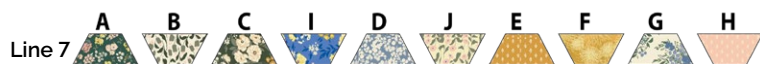


DIAGRAM 10

Line 8: Arrange template from fabrics **A, B, C, I, D, J, E, F, G, H** in the order shown on diagram below. Pay attention to the position of the templates, in line 8 you also start with fabric **A**, but this time the template is positioned with the wide side of the template up.



DIAGRAM 11

• Sew line 7 and 8. Make a total of (8) Row 4.

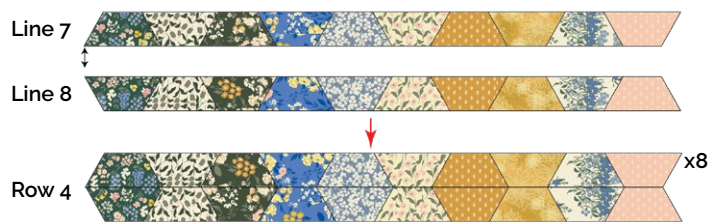


DIAGRAM 12

Row 5:

Arrange template from fabrics **A, B, C, I, D, J, E, F, G** and **C** in the order shown on the diagram below. Pay attention to the position of the templates, in row 5 you start with fabric **A**, and the template is positioned with the narrow side of the template up. You need a total of (2) Row 5.

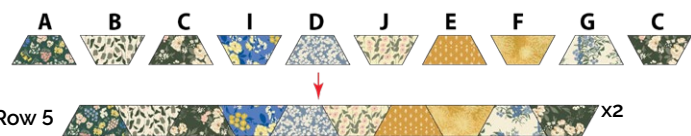


DIAGRAM 13

Row 6:

Arrange template from fabrics **C, G, F, E, J, D, I, C, B** and **A** in the order shown on the diagram below. Pay attention to the position of the templates, in this row you start with fabric **C**, and the template is positioned with the wide side of the template up. You need a total of (2) Row 6.

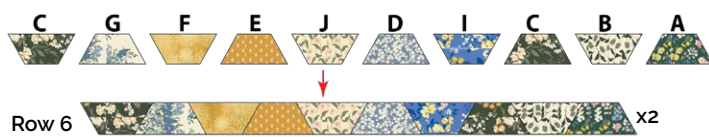


DIAGRAM 14

Block 1

- Arrange rows previously sewn in the order shown on the diagram below. Follow the black arrows to know where to start sewing and match all the seams by following the red arrows, that will help you to make sure each seam is in the position where it should be. We recommend to pin where the red arrows are.

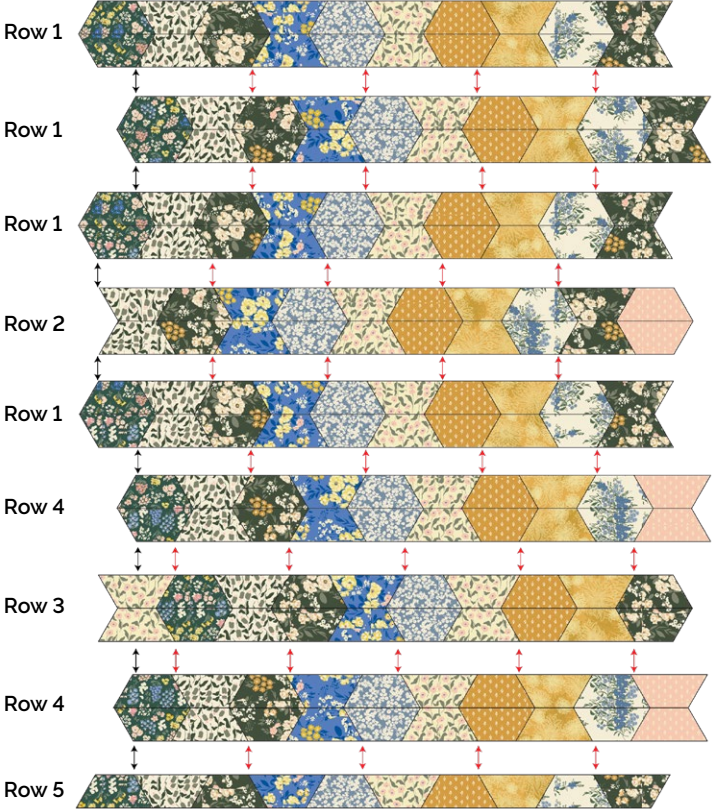


DIAGRAM 15

- Your block should look like the diagram below. Trim excess fabric on each side of block 1. Make a total of (2) block 1.

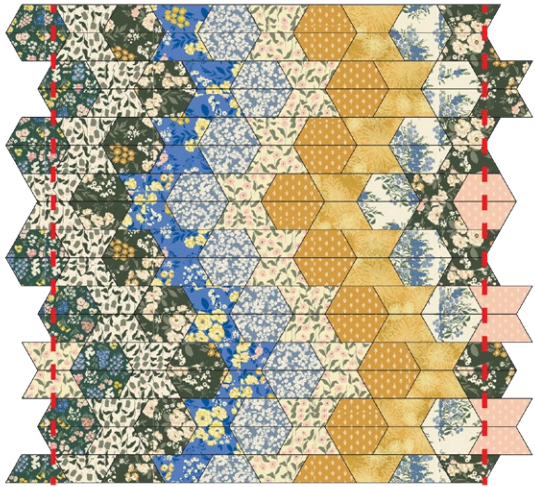
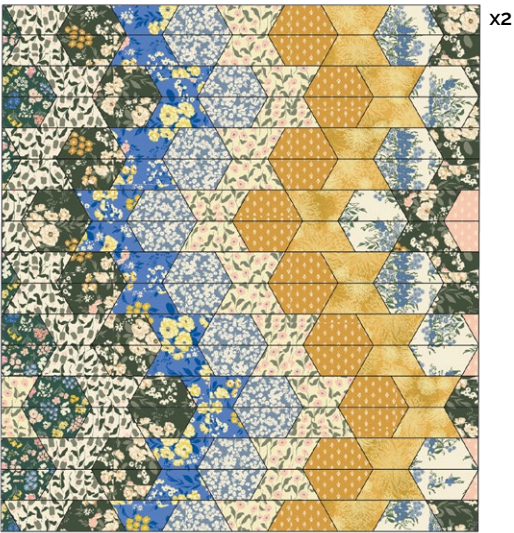


DIAGRAM 16



Block 1

DIAGRAM 17

Block 2

- Arrange rows previously sewn in the order shown on the diagram below.
- Follow the black arrows to know where to start sewing, and match all the seams by following the red arrows, that will help you to make sure each seam is in the position where it should be. We recommend to pin where the red arrows are.

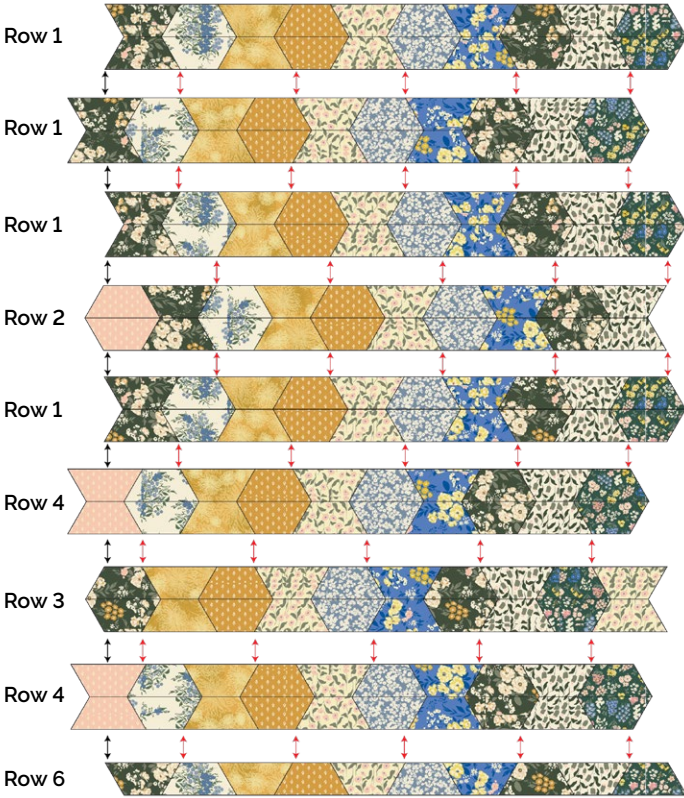


DIAGRAM 18

QUILT TOP

- Your block should look like the diagram below. Trim excess fabric on each side of block 2. Make a total of (2) block 2.

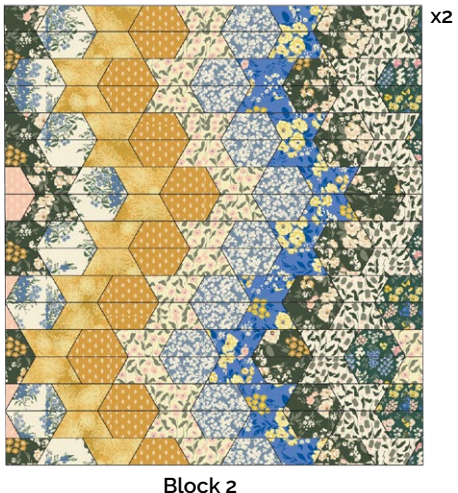
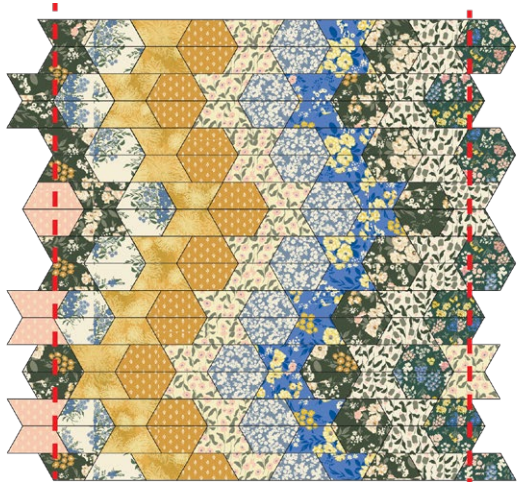


DIAGRAM 19

- Arrange block 1 and 2 into (2) rows of (2) blocks.

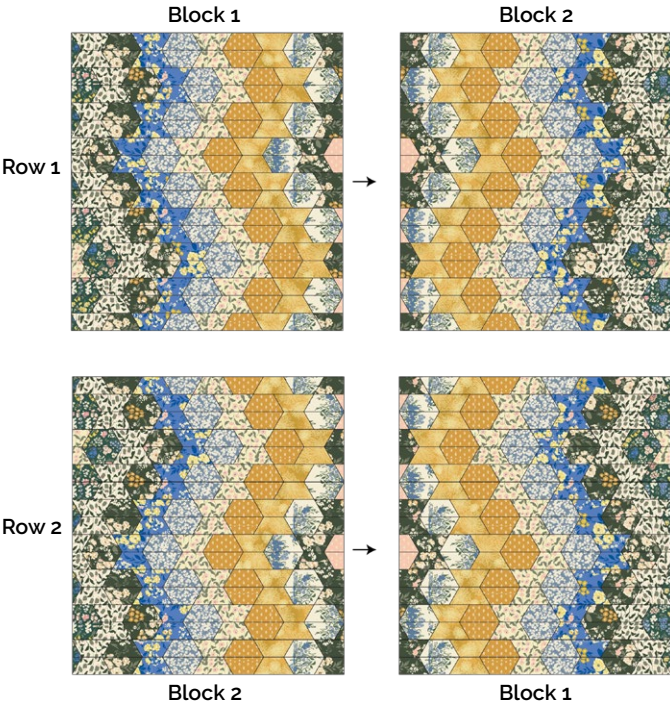


DIAGRAM 20

- Sew rows together.

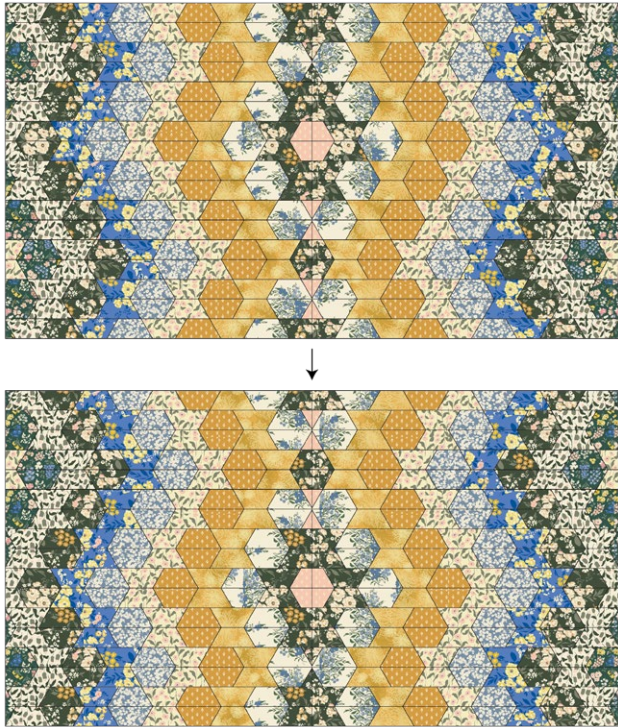
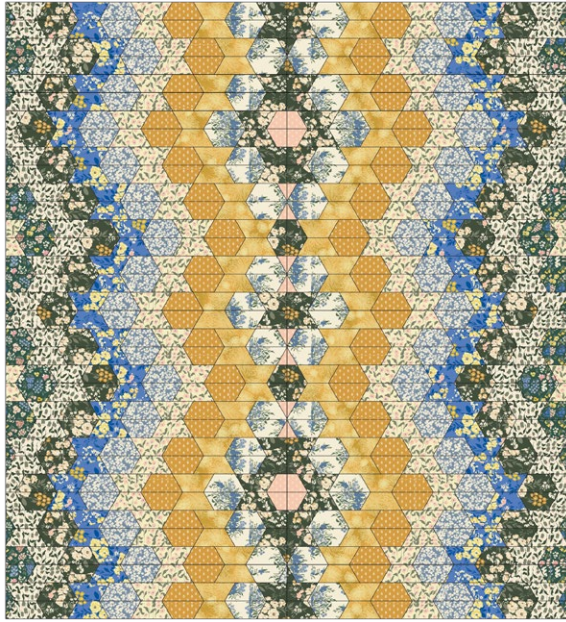


DIAGRAM 21

- Quilt as desired.



QUILT ASSEMBLY

Sew rights sides together.

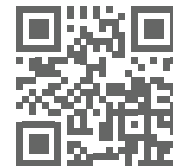
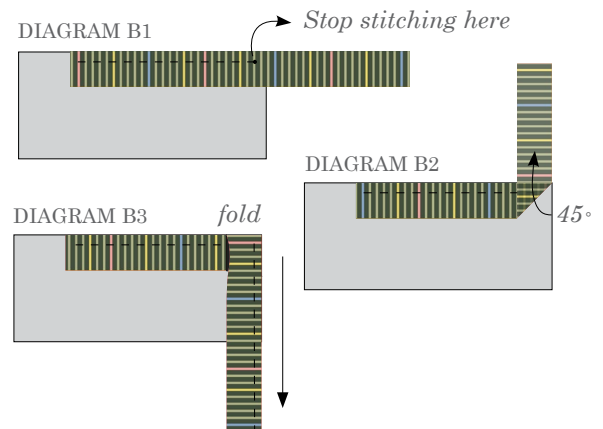
- Place BACKING FABRIC on a large surface wrong side up. Stretch it with masking tape against that surface.
- Place BATTING on top of backing fabric.
- Place TOP on top of the batting with right side facing up. Smooth away wrinkles using your hands.
- Pin all layers together and baste with basting thread, using long stitches. You can also use safety pins to join the layers.
- Machine or hand quilt starting at the center and working towards the corners. Remember that quilting motifs are a matter of personal preference. Have fun choosing yours!
- After you finished, trim excess of any fabric or batting, squaring the quilt to proceed to bind it.

BINDING

Sew rights sides together.

Cut enough strips $2\frac{1}{2}$ " wide by the width of the fabric **K** to make a final strip 336" long. Start sewing the binding strip in the middle of one of the sides of the quilt, placing the strip right side down and leaving an approximated 5" tail. Sew with $\frac{1}{4}$ " seam allowance (using straight stitch), aligning the strip's raw edge with the quilt top's raw edge.

- Stop stitching $\frac{1}{4}$ " before the edge of the quilt (DIAGRAM B 1). Clip the threads. Remove the quilt from under the machine presser foot. Fold the strip in a motion of 45° and upward, pressing with your fingers (DIAGRAM B2). Hold this fold with your finger, bring the strip down in line with the next edge, making a horizontal fold that aligns with the top edge of the quilt (DIAGRAM B3). Start sewing at $\frac{1}{4}$ " of the border, stitching all the layers. Do the same in the four corners of the quilt.
- Stop stitching before you reach the last 5 or 6 inches. Cut the threads and remove the quilt from under the machine presser foot. Lay the loose ends of the binding flat along the quilt edge, folding the ends back on themselves where they meet. Press them together to form a crease. Using this crease as the stitching line, sew the two open ends of the binding with right sides together (you can help yourself marking with a pencil if the crease is difficult to see).
- Trim seam to $\frac{1}{4}$ " and press open. Complete the sewing. Turn binding to back of the quilt, turn raw edge inside and stitch by hand using blind stitch.
- If you are using our 2.5 edition (binding fabric), click or scan this QR code to see a tutorial on how to use this specialty fabric.



XX

*Congratulations
& enjoy*

XX



artgalleryfabrics.com

NOTE: While all possible care has been taken to ensure the accuracy of this pattern, We are not responsible for printing errors or the way in which individual work varies.

Please read instructions carefully before starting the construction of this quilt. If desired, wash and iron your fabrics before starting to cut.

© 2024 Courtesy of Art Gallery Quilts LLC. All Rights Reserved.

1" Test Square

